


口ナモ巾乃ム



メニユ

 @OTEMBA.GYOZA

 @OTEMBA.RAMEN

 @OTEMBA.AMSTERDAM

WWW.OTEMBA.COM

GOOD TO KNOW: WE DON'T
ACCEPT CASH.

TO START

ぜんざい

KYURI CUCUMBER  **5.50**

SHIO VINAIGRETTE | SESAME

(SOY, GLUTEN, SESAME)

SPICY EDAMAME   **6.95**

SEA SALT | CRISPY CHILLI OIL

(SOY, MUSTARD, SESAME)

GYOOOZA

3 PCS	6.25
5 PCS	9.95
+ 1 PC	+2.50

OTEMBA

CHICKEN GYOZA | MISO - PONZU BEURRE BLANC | KIZAMI NORI | CHIVES

(GLUTEN, LACTOSE, SESAME, SOY)

KYOTO

DUCK GYOZA | THAI NAM JIM JAEW | CORIANDER

(GLUTEN, SESAME, SOY, FISH)

AMSTERDAM

LANGOUSTINE GYOZA | OLD AMSTERDAM

(GLUTEN, SESAME, CELERY, SOY, LACTOSE, SHELLFISH)

OSAKA  

5 VEGETABLES GYOZA | JAPANESE PUMPKIN | MISO | GINGER | CHILLI

(GLUTEN, SESAME, SOY)

SMALL PLATES

KIMCHI FRIES  **9.75**

FRIES | KIMCHI | BLACK SESAME | SPICY MAYO

(GLUTEN, EGG, SESAME, SOY, MUSTARD)

YAKITORI 2 SKEWERS **9.95**

MISO MAYO | CRISPY CHICKEN SKIN-FURIKAKE

EXTRA SKEWER **+4.90**

(GLUTEN, EGG, SESAME, SOY, MUSTARD)

PRAWN CRACKERS **8.50**

PONZU PRAWNS | WASABI CRACKER | AJI AMARILLO MAYO | YUZU- HUMMUS

(GLUTEN, SHELLFISH, EGG, SOY, MUSTARD, SESAME)

'SALMON' NIGIRI  **7.95**

CRISPY SUSHI RICE | VEGAN SALMON | WASABI | VEGAN CAVIAR

(MUSTARD, TRACES OF GLUTEN)

TATSUTA **10.95**

FRIED CHICKEN | CHILLI CHAN'S 'CRISPY' MAYO | LIME

(GLUTEN, EGG, SESAME, SOY, CELERY, MUSTARD)

TAKOYAKI **9.50**

OKONOMIYAKI SAUCE | KATSUOBUSHI | KEWPIE MAYO

(GLUTEN, EGG, FISH, SOY, CELERY, MUSTARD, SESAME, MOLLUSKS)

おつまみ



ALLERGIES ALL INGREDIENTS ARE LISTED. HOWEVER, TRACES OF OTHER ALLERGIES CAN OCCUR. OUR MEAT IS NOT HALAL. PLEASE NOTE THAT DEEFPRIED ITEMS MAY BE COOKED IN THE SAME OIL AS OTHER NON- VEGETARIAN INGREDIENTS. WE USE SOYABEAN SOY THAT IS PRODUCED FROM GENETICALLY MODIFIED SOYA. RAMEN IS NOT FULLY GLUTEN FREE EVEN WHEN SERVED WITH GLUTEN FREE NOODLES.

 VEGAN

 VEGA

 SPICY

ラ
ー
メ
ン

RAMEN

TONKOTSU 20.95

PORK BROTH | PORK BELLY | SHIITAKE
| BLACK GARLIC | SPRING ONION | EGG
| NORI

SPICE UP YOUR TONKOTSU WITH SPICY OIL 🌶️ +1.00

(GLUTEN, EGG, FISH, SOY, SESAME, SULPHITE)

TANTANMEN 🌱🌶️ 18.95

CREAMY SESAME - PEANUT BROTH |
GLAZED TOFU | CRISPY CORN |
SNOW PEAS | EGG | NORI

CHEF'S RECOMMENDATIONS | SPICY CHICKEN INSTEAD OF TOFU +1.50

OR PORK BELLY INSTEAD OF TOFU +1.50

VEGAN? 🌱 TELL US!

(GLUTEN, EGG, PEANUT, SESAME, SOY, MUSTARD)

SPICY MISO 🌱🌶️ 18.95

MISO BROTH | GLAZED TOFU | SNOW PEAS |
WAKAME | BEAN SPROUTS | EGG | NORI

CHEF'S RECOMMENDATION | SPICY CHICKEN INSTEAD OF TOFU +1.50

PORK BELLY INSTEAD OF TOFU +1.50

HALAL? GET TATSUTA CHICKEN INSTEAD OF TOFU +2.00

VEGAN? 🌱 NOT SPICY? WE GOT YOU!

(GLUTEN, EGG, SESAME, SOY, MUSTARD)

SPECIAL MONTHLY RAMEN 20.95

ASK OUR STAFF FOR THE SPECIAL RAMEN!

ASK FOR ALLERGIES.

GLUTEN 'LIGHT' - SWAP YOUR RAMEN NOODLES FOR GLUTEN FREE NOODLES FOR 1.50. PLEASE NOTE THAT RAMEN IS NOT FULLY GLUTEN FREE EVEN WHEN SERVED WITH GLUTEN FREE NOODLES.

ト
ッ
ピ
ン
グ

PIMP YOUR RAMEN

KIMCHI ON THE SIDE 🌱 3.50

BY OH NA MI

OTEMBA HALF EGG 1.00

MORE THAN JUST A STANDARD NITAMAGO.
CURED IN OUR HOMEMADE SHOYU SAUCE
OVERNIGHT.

MEAT *CHOOSE ANY 3.95

SPICY MINCED CHICKEN / PORK BELLY

VEGGIE 🌱 *CHOOSE ANY 2.50

TOFU / SNOW PEAS / CRISPY CORN /
SHIITAKE

SPICE UP YOUR LIFE

OTEMBA HOMEMADE SPICY OIL 🌶️ 1.00

OTEMBA SUPER SPICE 🌶️🌶️ 1.25

CHILLI CHAN'S CRISPY OIL 🌶️ 1.50

ス
イ
ー
ツ

SWEETS

OTEMBA SOFT SERVE 🌱 4.50

GREEN TEA LIME | BLACK CONE

(GLUTEN, LACTOSE)



APPLE PIE GYOZA 🌱 8.25

GREEN APPLE | RASPBERRY BALSAMIC

(GLUTEN, SULPHITE)

MOCHI YUZU 🌱 4.50

(SOY)

**DID YOU KNOW?
WE'VE GOT AN
OTEMBA-GYOZA
BAR IN 'DE PIJP'.**

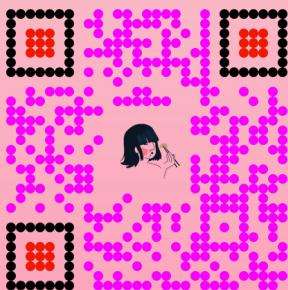
**LOVE OUR RAMEN
AND GYOZA?
THEN GET THIS—
WE'RE SERVING
UP TWO OF OUR
SIGNATURE
RAMEN AT
OTEMBA-GYOZA.
IT'S THE SPOT
FOR NEXT-LEVEL
GYOZA AND A
LAID-BACK VIBE
WHERE HIP-HOP
CULTURE MEETS
TOKYO STREET
FOOD.**

**VAN WOUSTRAAT 15
AMSTERDAM, DE PIJP**



**OTEMBA, A NAME
THAT STANDS FOR
THE POWERFUL
JAPANESE LADY WHO
GOES HER OWN WAY.
UNTAMABLE, WILD
AND CHALLENGING.**

**FOLLOW US &
STAY TUNED.**



LEMONADE

OTEMBA ORANGE 4.50

CARROT, APPLE &
GINGER

YUZU NOT YUZU 4.50

LEMONGRASS, PEAR &
LIME

ICED TEA

OTEMBA ICE TEA 4.50

BLACK TEA, LIME,
GRAPE, MINT & APPLE

BERRY WHITE 4.50

WHITE TEA, RED
FRUIT & PETALS

SOFT DRINKS

COCA COLA 3.90

COLA ZERO 3.90

TONIC 3.90

GINGER BEER 3.90

GRAPEFRUIT SODA 4.50

WATER

ONLY FRESH, FILTERED ECO-
TAP WATER HERE! UNLIMITED
REFILLS FOR A SMALL SERVICE
FEE. SIP SUSTAINABLY!

STILL / SPARKLING 2.00

PER

GUEST

TEA'S

JASMINE SUPERIOR 3.80

GREEN TEA

GINGER LEMON TEA 3.80

GREEN TEA

BERRY WHITE TEA 3.80

WHITE TEA, RED
FRUIT PETALS

BEERS 0.0%

HEINEKEN 3.90

FRUITY & MILDLY
MALTY | 0.0%

BRAND IPA 4.50

HOPPY & CITRUS,
WITH A VERY SUBTLE
BITTERNESS | 0.0%

BEERS ON TAP

HEINEKEN 3.40/4.00/8.50

MILD BITTER | 5%

NOORDT X OTEMBA 5.95

BLOND | SMOOTH &
SUBTLE | 6%

BRAND WEIZEN 5.95

TRADITIONAL | FULL-
MALT WHEAT BEER |
YET FRESH IN EVERY
SIP | 5.1%

SEASONAL BEER 6.50

ASK OUR STAFF FOR
THE SEASONAL BEER

BEERS BY THE BOTTLE

ASAHI 5.60

JAPANESE LAGER |
MILD & BITTER | 5%

WHITE WINE



EL CONVERTIDO 6.00 / 30.00

VERDEJO | FRESH &
FRAGRANT | ORGANIC |
MANCHA, SPAIN

**BIS BY
BISCAYE** 6.50 / 32.50

CHARDONNAY | SOFT &
FRUITY | LANGUEDOC-
ROUSILLON, FRANCE

RED WINE

DEAKIN SERVED COLD. 6.00 / 30.00

PINOT NOIR | SOFT,
OPEN & FRUITY | CLIFFS
| VICTORIA, AUSTRALIA

ROSE

BLUSH 6.00 / 30.00

PINOT GRIGIO | FRESH,
DRY & FRUITY | VENETO,
ITALY

D
R
I
N
K
S

ド
リ
ン
ク



OTEMBA CLASSICS

OTEMBA PALOMA 11.00
SMOKEY MESCAL | GRAPEFRUIT | LEMON

WHITE NEGRONI 11.00
YUZU GIN | ELDERFLOWER | SAKE

OOLONG OLD FASHIONED 11.00
TEA INFUSED WHISKEY | SYRUP | ANGOSTURA

OTEMBA YUZU HIGHBALL 11.00
OTEMBA YUZU SAKE BY MIKUCHI | TONIC | YUZU JUICE

MUTSU MULE 11.00
OTEMBA VODKA | GINGER BEER | ANGOSTURA BITTER

OTEMBA G&T 11.00
OTEMBA GIN | TONIC | LIME

OTEMBA SPRITZ 11.00
APEROL | TONIC | ORANGE

WHISKEYS

TENJAKU 7.00
BLENDED | YOUNG & FAIRLY LIGHT | FRUITY | 48%

NOBUSHI 11.00
BLENDED | SILKY & SMOOTH | MINT & EARTHY VANILLA | 40%

NIKKA FROM THE BARREL 15.00
BLENDED | INTENSE & RICH | 51.4%



SAKE

MIKUCHI JUNMAI 7.00 / 14.95
70ml / 180ml
FRESH, LIGHT AND ACIDIC | KYOTO | 12.4%

NOMO NOMO 7.50
70ml
FRESH & AROMATIC | HYOGO | 13.5%

TU NE HONJOZO 14.95
180ml
MILD & SMOOTH | KYOTO | 15%

JUNMAI GINJO GOLD EDITION 21.00
300ml
REFINED & EXPRESSIVE | HYOGO | 14.7%

SPECIAL SAKE

ASK OUR STAFF FOR THE SPECIAL SAKE!

LIQUEUR

OTEMBA YUZU BY MIKUCHI 7.00
70ml
YUZU LIQUEUR | FRESH & LIGHT | A FAVORITE OF TEAM OTEMBA | 5%

JOIN THE OTEMBA COMMUNITY!

SIGN UP FOR OUR LOYALTY PROGRAM.

REDEEM REWARDS, RECEIVE FREE VOUCHERS & CELEBRATE YOUR BIRTHDAY WITH A FREE OTEMBA PALOMA!



BE OTEMBA

OTEMBA TOTE BAG 10.00
CARRY YOUR CHAOS IN STYLE

MIKUCHI JUNMAI SAKE 14.95
180ml

JAPANESE DINNER AT HOME? GET THE UPGRADE!

OTEMBA YUZU SAKE BY MIKUCHI 39.95
750ml

QUIET NIGHT IN? LOUD NIGHT OUT? THIS SAKE GOT YOUR BACK.

**DID YOU KNOW?
THAT WE HAVE
AN OTEMBA-
GYOZA BAR IN
'DE PIJP'.**

**OTEMBA-GYOZA
IS THE HOTSPOT
FOR LOTS OF
GYOZA, OUR
POPULAR RAMEN
ENJOY
JAPANESE SAKE,
WHISKY, AND
HIGHBALLS IN A
COOL, RELAXED
SETTING WHERE
HIP HOP
CULTURE MEETS
JAPANESE
STREET FOOD.**



**VAN WOUSTRAAT 15
AMSTERDAM, DE PIJP**



**OTEMBA, A NAME
THAT STANDS FOR
THE POWERFUL
JAPANESE LADY WHO
GOES HER OWN WAY.
UNTAMABLE, WILD
AND CHALLENGING.**

**FOLLOW US &
STAY TUNED.**

